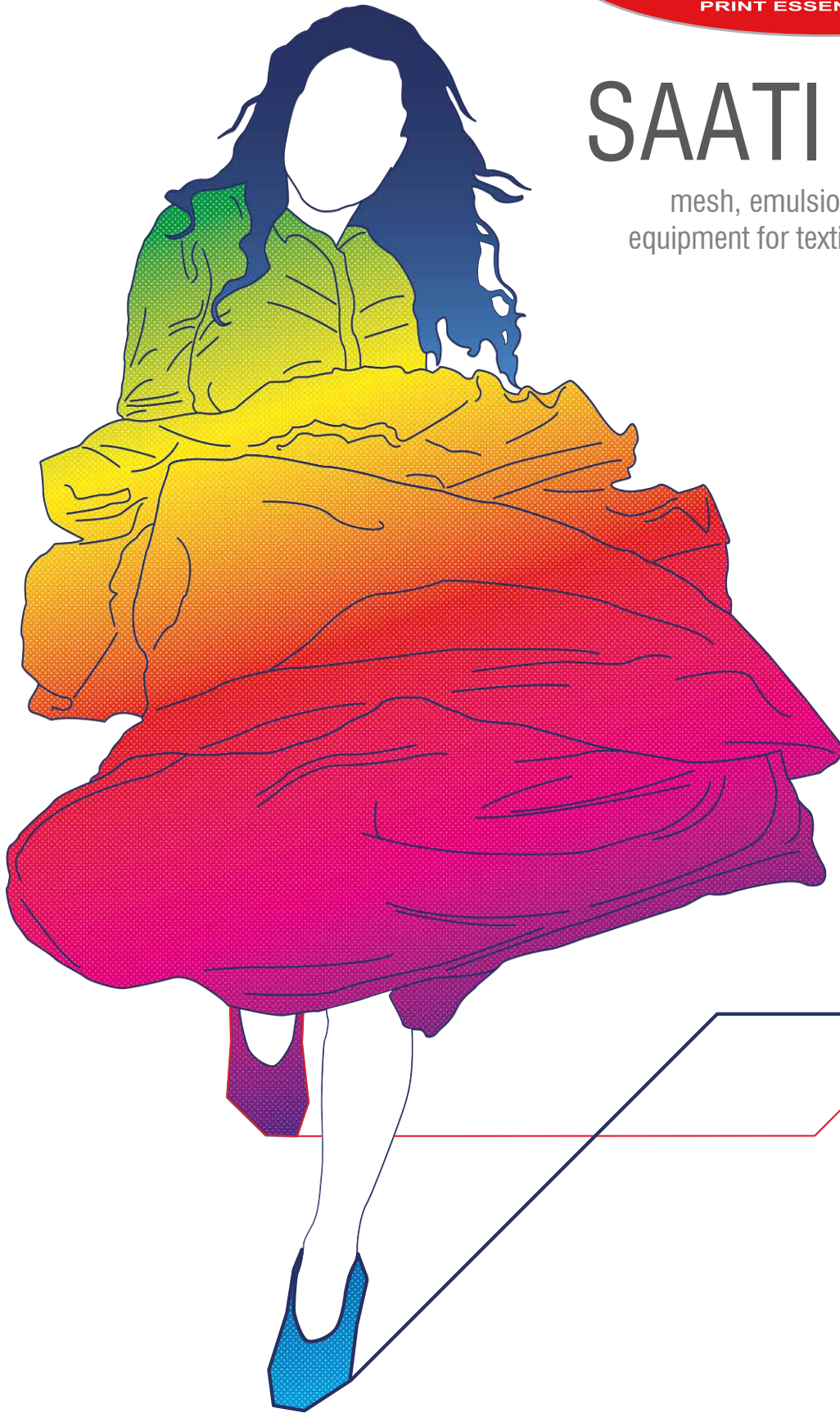




SAATI textile

mesh, emulsion, chemistry and
equipment for textile screenprinting



—SAATI—TEC



The Saati-Tec range of products is your one-stop source for all screen-making products, from preparation materials and cleansers to reclaiming products.

Our range is meticulously designed to be your go-to for every screen-making need, delivering unparalleled results every time.

Why Choose Saati-Tec?

All-Inclusive Selection: Dive into our extensive collection of screen-making essentials. From the initial preparation stages to the final touches, our full range of products covers it all. Experience the ease of finding everything you need in one place.

Revolutionary Reclaiming Solutions: Rejuvenate your screens with our complete line of screen reclaiming products. Saati's innovative formulas are crafted to efficiently clean and restore, prolonging the life and quality of your screens.

Premium Screen Cleaners and Chemicals: Our selection of screen cleaners and chemicals are designed with precision and formulated to offer superior cleaning performance, ensuring that your screens maintain their pristine condition for longer.

Index

3 -5 Mesh	13 Squeegee
6 Stretching Clamps	14 Cleaning
7 Adhesives	15 Reclaiming
8 Mesh Prep	16 Services
9 Emulsions	17 Brushes / Pallet Knives
10 Hardeners / Fillers	18 - 19 Screen Accessories
11 - 12 Quality Control	20 Equipment

Hi-Dro Mesh

Surface Treated Mesh Especially For Water-Based Ink Printing and Fine Detail Printing

SAATI HI-DRO is a high modulus, low elongation monofilament polyester screenprinting fabric with a proprietary surface treatment developed to meet the requirements of garment printing applications. Especially designed to optimize the deposit when printing with water based inks, this new range was constructed maintaining the same mesh counts and using thinner thread diameters.

Right : SAATI HiDro 78.40 vs standard mesh 62.64.
Show the result of two passes with white plastisol ink on a black t-shirt fabric.



Hi-Dro

Standard Mesh

KEY PRODUCTS CHARACTERISTICS

- Optimized mesh geometry and precise mesh openings due to the improved production process
- Excellent antistatic property
- Long lasting plasma treatment surface modification.
- Range of mesh counts from 32-120 threads per cm
- Safe under exposure with all emulsion types:
- Photopolymer, Dual-Cure, Diazo and Capillary Films.

BENEFITS OF THIN THREAD MESH

- Better printability
- Improved ink flow with all ink types
- Reduction of moiré effect
- Excellent coverage on dark garments
- Less stencil cleaning work during printing.

BENEFITS OF SURFACE TREATMENT

- Improved adhesion characteristics of small halftone dots and fine lines
- Even and consistent surface characteristics, enhanced for extreme durability
- Excellent ink release properties
- No degreasing pretreatment step prior to stencil processing, thanks to SAATI unique plasma surface treatment
- Excellent for use with abrasive printing conditions, inks and pastes.

Article	Mesh Count	Thread Diameter	Mesh Opening	Open Area	Fabric Thickness	Theoretical Ink Volume	Specific Cross Section	Max. Recom. Tension
	per cm	μm	μm	%	μm	cm ³ /m ²	mm ² /cm	N/cm
32.70 PW	32	70	245	61	110	67	0.123	24-26
43.64 PW	43	64	170	53	100	53	0.138	27-30
48.55 PW	48	55	153	55	90	50	0.185	24-26
55.48 PW	55	48	125	50	78	39	0.099	25-28
62.48 PW	62	48	109	46	77	35	0.112	25-28
78.40 PW	78	40	85	44	65	29	0.098	20-24
90.40 PW	90	40	68	38	62	24	0.113	20-24
120.31 PW	120	31	53	40	48	19	0.091	21-24

The above data are average values measured on piece-good in relaxed state, manufactured with yarns of a perfect nominal diameter (cfr. international standards), under normal hygrometric conditions (20°C=68°F, 65% relative humidity). They are subject to normal variations up to 7% if conditions vary from those stated above. The listed technical specifications, exception made for the thread diameter indicated with its nominal value, are referred to the arithmetic mean value of production samples and are subject to change, in accordance with our policy of continuously improving our products. The tension tests are realised with TOP 12 series clamp system and appropriate frames at our laboratories. PW: plain weave (1:1)

Hi-R Mesh

Premium Quality High-Tension, Low-Elongation Mesh With Surface Modification

SAATI HI-R is a high-modulus, low-elongation monofilament polyester screen printing fabric with a proprietary surface treatment ideal for all traditional applications.

KEY CHARACTERISTICS

- High tension, low elongation, optimally performing monofilament polyester
- Superior stencil adhesion, resulting in less stencil breakdown on press, delivering longer print runs far beyond other conventional treated fabrics
- Shorter exposure times, due to increased stencil adhesion.
- Holds finer detail with no compromise in stencil durability (halftones, fine lines etc.)

BENEFITS

- Applied to fabrics in widths up to 120"
- Safe under exposure with all emulsion/film types: Diazo, Dual Cure, and Photopolymer
- Excellent for use with abrasive printing conditions, inks and pastes.



BENEFITS OF SURFACE TREATMENT

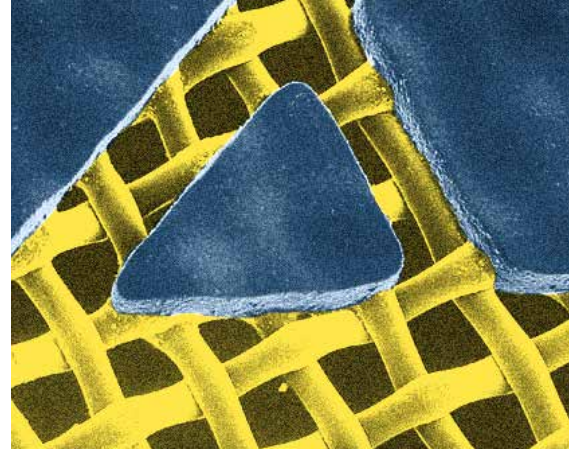
- Improved adhesion characteristics of small halftone dots and fine lines
- Even and consistent surface characteristics, enhanced for extreme durability
- Excellent ink release properties
- Ready-to-use, the degreasing process can be eliminated.

Mesh Count	Type Of Weave	Thread Diameter	Mesh Opening	Overall Fabric Thickness	Open Area	Theoretical Ink Deposit	Max. Recom. Tension	Specific Cross Section
per cm	TW or PW	microns	microns	microns	%	cm ³ /m ²	N/cm	SCS mm ² /cm
100	PW	40	55	64	31	20	26-28	0.125
100	PW	48	40	81	16	13	30-34	0.181
110	PW	34	53	56	35	20	22-24	0.099
110	PW	40	47	69	26	18	25-30	0.138
120	PW	31	53	48	40	19	21-24	0.09
120	PW	34	45	54	29	16	24-26	0.108
120	PW	40	38	67	20	13	27-32	0.15
130	PW	34	39	55	26	14	24-27	0.118
140	PW	31	38	48	28	13	20-22	0.105
140	PW	34	29	56	16	9	23-26	0.127
140	TW	34	32	60	20	12	23-26	0.127
150	PW	31	29	49	20	10	22-24	0.113
150	PW	34	25	56	13	7	25-27	0.136
150	TW	34	28	61	17	10	25-27	0.136
165	PW	27	30	46	25	12	17-21	0.094
165	PW	31	25	49	17	8	24-26	0.125
180	PW	27	25	43	20	8	18-22	0.103

Hi-Tex Mesh

High Quality Mesh Without The High Cost

For the printer looking to save on cost while not compromising the print, we offer SAATI Hi-Tex printing mesh, containing the same high tension, low elongation characteristics known throughout the globe. This offering is a standard precision woven fabric that is excellent for textile, graphic, and low mesh count applications. The absence of treatment as well as the tailored specification offerings allows for the lowest prices, promoting cost savings to those who do not reclaim screens or have a high turn over in screen processing.



Article	Mesh Count	Thread Diameter	Mesh Opening	Open Area	Fabric Thickness	Theoretical Ink Deposit	Specific Cross Section	Max. Recom. Tension From-To
	per cm	microns	microns	%	microns	cm ³ /m ²	mm ² /cm	N/cm
10,5.260 PW	10.5	260	700	52	478	249	0.557	35-60
12,145 PW	12	145	700	68	270	184	0.198	35-60
15,200 PW	15	200	475	50	365	183	0.471	35-60
18,160 PW	18	160	400	52	285	148	0.362	35-60
21,160 PW	21	160	330	46	285	131	0.422	35-60
24,120 PW	24	120	290	50	216	108	0.271	35-60
27,120 PW	27	120	250	44	222	98	0.305	35-60
29,120 PW	29	120	220	41	218	89	0.328	35-60
32,100 PW	32	100	200	43	160	69	0.251	35-40
34,100 PW	34	100	185	41	173	71	0.267	35-40
36,90 PW	36	90	190	45	145	65	0.229	35-40
43,80 PW	43	80	150	43	138	59	0.216	35-37
49,70 PW	49	70	130	40	116	46	0.188	30-34
55,64 PW	55	64	120	41	105	43	0.177	23-31
62,64 PW	62	64	90	32	106	34	0.199	30-34
71,55 PW	71	55	80	33	93	31	0.169	25-30
77,55 PW	77	55	70	28	90	25	0.183	27-32
90,48 PW	90	48	55	27	81	22	0.163	27-29
100,40 PW	100	40	55	31	63	20	0.126	26-28
120,34 PW	120	34	45	29	54	16	0.109	24-26

More mesh counts available upon request.

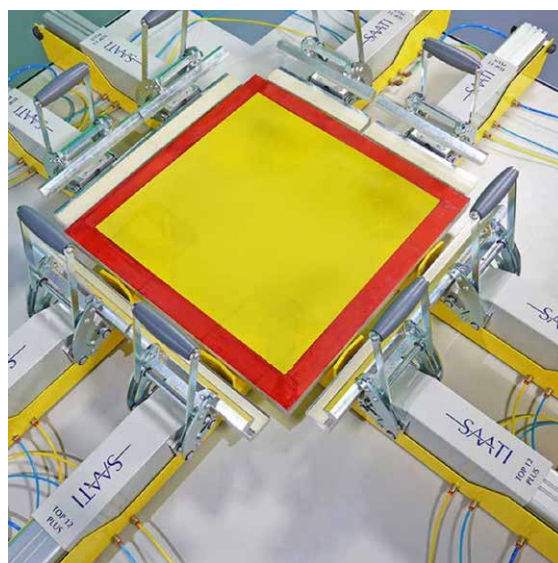
SAATI Top 12 Plus Stretching Clamps

Rapidly Stretch Screen Off-Contact with Durable, Intuitive Stretch Clamps

The new SAATI Top 12 Plus Clamp provides optimum pneumatic screen tensioning. This highly advanced yet easy to use system achieves the highest tensions recommended more uniformly, without over-tensioning the corners. It provides the greatest stability of any system available. Among the most notable features of this premier stretching system is its independent or simultaneous warp/weft tensioning capability (when used with optional control panel).

In addition, its unmatched, patented “raise/lower” design pre-stresses the frame while simultaneously eliminating mesh contact with the frame surface during stretching. This specialized “non-contact” stretching eliminates any hazardous friction, uneven tensioning or resultant tears caused by distorting the mesh when it comes in contact with rough or uneven frame surfaces.

The long 120mm stroke per clamp allows for almost 250mm of total stretch in each direction. A special pneumatic device lifts the mesh above the frame for stretching, while the clamps hold (and pre-stress) the frame. Once the desired tension is achieved, the mesh is lowered for adhesion to the frame. SAATI clamps feature a uniquely-designed modular plug-in system for easy set-up in minutes.



TECHNICAL FEATURES

- CE Certified
- Internal components extruded in aluminum, exterior in powder coated steel
- Independent pneumatic control for both horizontal axis (via optional control panel)
- Daisy chain connection, no manifold needed
- Adjustable frame support.

BENEFITS

- Higher tension, longer stroke
- Tension from small frames to extremely large frames
- Very high degree of repeatability
- High reliability, easy maintenance.



Top 12 Plus Technical Specifications

Clamp Weight	10 kg
Clamp Total Length	652 mm
Stretching Stroke	120 mm
Lifting Stroke	15 mm
Clamp Length to Frame Contact Point	540 mm
Maximum Tension	60 N/cm
Compressed Air	95-100 PSI (humidity free air line required)
Jaw Width	250 mm (std) 150 mm (on request)
Table Size	Frame external size + 108 cm

SAATI Screen Adhesives

Adhesives for Screen Production and Securing Media On-Press

ULTRAFIX is SAATI's product line for screen printing adhesives. They attach mesh to frame with durable bonds and the highest resistance against screen cleaners and an outstanding adhesion on all different screen frames: both wood and metal.



ULTRAFIX SB PLUS SERIES

Fast-curing, 2-part, urethane-based adhesive with superior resistance to aggressive solvents

ULTRAFIX SB9 PLUS

- Very opaque after drying, SB9 Plus has a smooth and even surface
- Good on any frame surface and its high initial adhesion allows gluing of screen mesh on wooden and aluminium frames
- Superior resistance to solvents and heat; ideal in automatic cleaning machine
- Ultrafix SB9 Plus is low viscosity adhesive for medium to fine fabrics mesh-counts
- Screentec uses this product in its production runs.

ULTRAFIX SB4 PLUS

- Extraordinary initial adhesion allows to glue screen mesh also on untreated aluminium frames
- Extraordinary initial adhesion allows screens to be removed from the stretching system only minutes after application
- Superior resistance to solvents and heat; ideal in automatic cleaning machine
- Ultrafix SB4 Plus is low viscosity adhesive for medium to fine fabrics mesh-counts.

Description	SB4 Plus	SB9 Plus
Viscosity	Low	Low
Colour	Green	Red
For Mesh Counts	>55	>55
Pot Life	90-120 min	90-120 min
Mixing Ratio	5 parts : 1 part catalyst	5 parts : 1 part catalyst
Why Choose This Product	Can be used on aluminum frames. Suggested for automatic machines. Slower	It does not contain Acetone

SPRAY ADHESIVE

Holds garments securely on platen.

- Long lasting
- Good adhesion
- Ideal for automatic machines with IR lamps
- Suitable for many kinds of fabric
- It doesn't spot and transfer onto fabric.



ULTRAFIX PT

Holds garments securely on pallet, or belt, during printing.

- Water-based pressure sensitive adhesive
- High tack level holds fleece & tees
- Flash safe & non-staining.

SAATI Mesh Preparation Chemicals

World Class Chemicals for Each Screen Cleaning Step

The SAATI product range comprises a full suite of products for screen preparation and recycling. SAATI mesh preparation products are economical, easy to use and provide consistent results with any mesh. Specially designed to clean and prepare your screen mesh surface, they improve film lamination, coating and bonding of direct photoemulsions and minimize pinholes, resulting in optimum stencil performance and durability. DIRECT PREP treats the fabric surface with a wetting agent, making the screen more “wetable” than an untreated, or simply degreased screen. Screens treated can hold an unbroken sheet of water on their surface when rinsing for completely uniform stencil adhesion. Can be used on any mesh count.

Direct Prep 1

Ready-to-use, one-step mesh abrader, wetting agent and degreaser.

- Prepares new monofilament synthetic fabric
- Does not clog mesh openings
- Dyed colour ensures complete rinse from mesh
- Highly recommended for capillary films.



Direct Prep 2

Combination Degreaser/Wetting Agent.

- Ready-to-use liquid wetting agent & degreaser
- Powerful detergent and degreaser in one step restores mesh after reclaiming.

Direct Prep 3

Concentrated Degreaser/Wetting Agent.

- 10 to 1 concentrated liquid wetting agent and degreaser
- Concentrated formula for economy
- 100% Biodegradable.

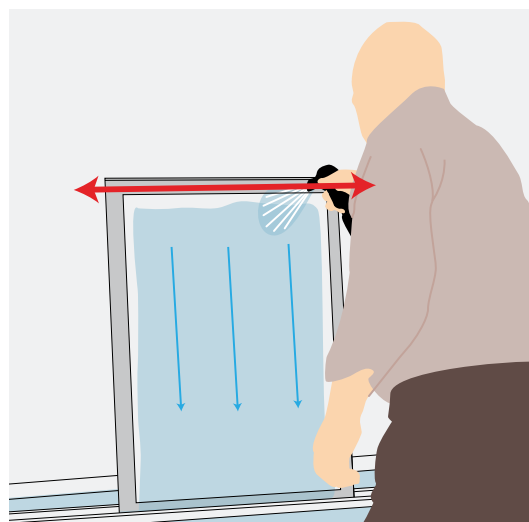
Description	Direct Prep 1	Direct Prep 2	Direct Prep 3
Viscosity	High	Low	Low
Colour	Green	Green	Brown
Mixing Ratio	Ready to use	Ready to use	10 parts : 1 part water
Why Choose This Product	Paste suitable for low mesh count.	Universal use. Degreases and cleans.	100% Biodegradable. Concentrated. Suggested for Pure Photopolymer emulsions

Correct Direct Prep Rinsing Technique

Following the application and wash-off of SAATI Direct Prep products, the final rinse technique is critical to preparing an optimal coating surface.

To correctly rinse a pretreated screen, flood it with a hose at the top, pointing the nozzle downward and rinse horizontally across the top of the screen, to create an unbroken cascade effect.

This technique results in a uniformly wet surface that will dry evenly and later coat evenly. If you notice disruptions in the flow of water down the fabric then you have identified remaining contaminants on the mesh surface that must be removed before they can compromise coating quality or create fisheyes in a coated screen.



SAATItex Emulsion

The World Class Range of Emulsions for Apparel and Other Textile Printing

SAATItex emulsions are designed specifically for the garment and textile industries. The SAATItex range encompasses pure photopolymer, diazo and our unique triple-cure technologies.

SAATItex emulsions feature wide latitude and yield high-resolution stencils with fewer pinholes. The high solids content and medium viscosity of SAATItex emulsions give good coverage on all mesh counts. All SAATItex emulsions are non-hazardous and biodegradable.

Textil DW

Flat textile printing, garment printing emulsion.

- Violet in colour
- 41% solids content and medium viscosity
- Highly water resistant diazo emulsion for use with plastisol and water based inks
- Economical emulsion for apparel printing
- Can be hardened with Saati Chemicals Fixer 9 to produce a permanent waterproof stencil.

Available in 0.9 and 4.5kg containers

SAATITEX HT + Diazo Saati A

Permanent, waterproof stencils for textile printing

- Blue high-resolution emulsion designed for textile printing applications
- 46% solids content and medium viscosity
- Triple-cure technology results in outstanding mechanical resistance and durability
- Not reclaimable after catalyzing with SAATI Fixer 9.

Available in 0.9 and 4.5kg containers

SAATI TEX HT FAST + Diazo Saati A

Blue triple-cure photo-emulsion for Flat bed and textile garment printing.

- Blue triple-cure emulsion for printing plastisol, water based and discharge inks
- 47% solids content and medium viscosity
- High resolution and definition.

Available in 0.9 and 4.5kg containers

SAATITEX PHU2

All purpose solvent and water resistant photoemulsion.

- Red or Blue one-part pure photopolymer emulsion, no mixing required
- 46% solids content and medium viscosity, easy coating on all mesh counts
- Approximately 4x faster than typical 2 part emulsion
- Universally resistant: Solvent and waterbased ink resistant, yet easy to reclaim
- Recommended for use with discharge inks as is, without using diazo or catalysts for stencil hardening
- Can be used with Diazo 11 when extra sharpness is required for high resolution.

Available in 1 and 5kg containers

Description	Textil DW	SAATItex HT	HT Fast	SAATItex PHU2
Viscosity	Medium	Medium	Medium	Medium
Colour	Violet	Blue	Blue	Red, Blue
Type	Diazo	Triple cure	Triple cure	Pure
Solids Content	41%	46%	47%	46%
Solvent Based Ink	No	Yes	Yes	Yes
Waterbased Ink	Yes	Yes	Yes	Yes
Plastisol	Yes	Yes	Yes	Yes
UV Curable	No	Yes	No	Yes
Exposure Speed	Medium	Low	Medium	High
Resolution	Good	Excellent	Excellent	Good
Why Choose This Product	Economical, water-resistant.	Mechanically resistant and durable. High resolution & definition. Can be hardened with Fixer	Resistant to discharge inks. 30/40% Faster exposure time than TEXTIL HT.	Universally resistant, 4 times faster than diazo. Wide latitude.

Fixer Series Emulsion Hardeners

Enhance the Durability of Your Stencils, or Create Catalyzed Permanent Stencils

FIXER SERIES

SAATI Fixer chemicals act as a catalyst for triple-cure emulsions (like SAATI[®] HT) to make a permanent, solvent resistant and waterproof stencil. They work as an emulsion hardener for water-resistant emulsions such as Textil DW to make more durable stencils that retain their reclaimability.

FIXER 9

Imparts higher resistance to any emulsion, particularly when applied to “Triple Cure Emulsions”

This is the product Screentec uses in it's production runs.

Product	Use on Poly Mesh	Use on Nylon Mesh	Cure at Room Temp	Cure at 40-50°C Temp	Effect on Standard Emulsion	Effect on Triple Cure Emulsion
Fixer 9	Yes	No	18-24 Hours	60-40 minutes	Difficult Reclaim	Not Reclaimable



SAATI Screen Fillers

High Quality Liquid Filler Products to Seal Screens and Fill Pinholes

SAATI Finish Series screen fillers offer both high performance and user friendliness. Finish Series screen fillers contain no solvents and provide increased filling power. All have pleasant smelling formulations and are both non-hazardous and biodegradable. Finish Series screen fillers spread smooth and uniformly for optimum drying and filling. Use to cover open mesh areas and pinholes.

Finish S2 (Standard Filler)

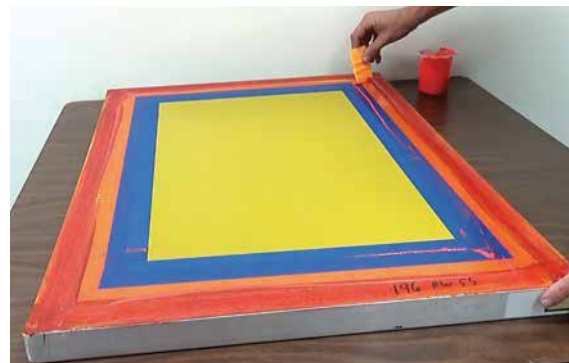
Increased filling power

- Blue, water-based liquid blackout
- Increased filling power and more resistance to breakdown in high-stress printing such as with cylinder presses
- For use with solvent-based, UV-cured & plastisol ink
- Removable with water.

Finish W1(Dark)

Unique reclaimable, water-based blackout

- Resistant to water and solvent
- Unlike other water-based blockouts, offers superior water resistance simply upon drying
- Resistant to water-based, plastisol, UVcured & solvent-based ink
- Very high solids content offers increased durability
- Can be removed with emulsion reclaiming chemicals and a pressure washer.



Finish S3

Highest viscosity Finish S product

- High viscosity version of Finish S2
- For optimum results on low mesh count screens.

Quality Control Devices

Maximize Efficiency by Improving the Quality of Your Stencils

When you measure quality at every stage of screen production and on press, you take control of the many variables in screen-making and printing. Most importantly, you have the means to the consistency and repeatability that will boost your screen-printing productivity and profitability. SAATI brings you the most comprehensive selection of highly accurate, yet easy-to-use instruments to monitor and confirm screen quality at each step.

As specialists in screen-making products and innovators in QC devices, we've made sure that these instruments are practical, affordably priced, durable enough for continuous use and simple to operate.

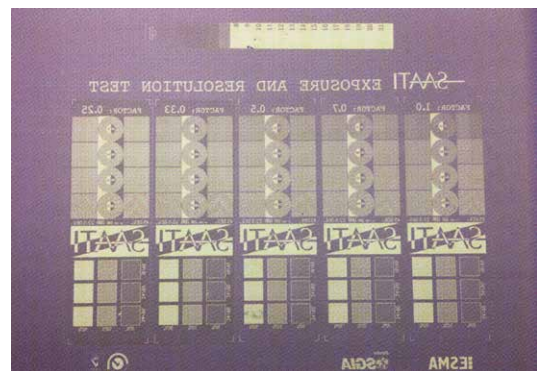
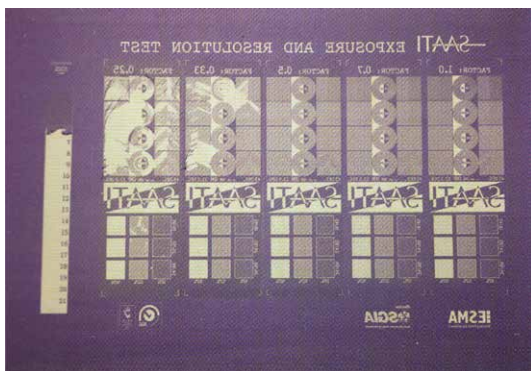
NEWMAN ST-METER® 1-E

A uniquely constructed, heavy-duty mechanical tension meter that assures durability and long term accuracy in monitoring screen tension. It is the only meter in the world with all stainless steel hardened gears, shock proof industrial grade internal gear movement and all jewelled sapphire bearings. A screen tension meter of exceptional quality, it will last longer and produce consistent readings every time. (All other mechanical meters have non-compound softer brass gears and bushing, greatly reducing their shock resistance, long-term accuracy and life.) The crystal is shatterproof and curved to avoid glare. The heavy-duty protective aluminium housing is the most durable meter made anywhere. The modular construction assures easy and inexpensive repairs, if necessary.



SAATI EXPOSURE CALCULATOR

Optically clear litho positive film for determining the correct exposure time for any particular type of photostencil emulsions or capillary films. It contains five identical columns of fine detail graphics. Four of these are covered with a neutral density filter with a different light transmission value, in order to obtain five different exposure times from one single exposure process. With this all-in-one film, it is very easy to identify the correct exposure time for future stencil production and it substitutes the traditional, time consuming step wedge exposure process.



Quality Control Devices

Maximize Efficiency by Improving the Quality of Your Stencils

SAATI 21-STEP SENSITIVITY GUIDE

This is the exposure guide of choice for accuracy, ease of use and all-purpose application. With the SAATI guide, there is no guesswork or complicated interpretation. A more precise tool than gelatin/density type exposure calculators, and unlike competitive products, it can be used on all stencil types and all mesh counts (other exposure guides are not compatible with pure photopolymer stencils, and do not perform as well on coarse mesh). Our 21-step guide is also much smaller (1/2" x 5 1/4"), so it can be used on all production screens. The SAATI Sensitivity Guide is a film containing a transmission type density scale with 21 steps ranging from transparent to opaque.

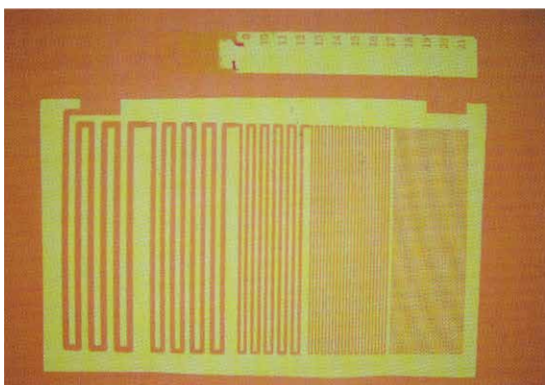
10 Seconds
Step 4
underexposed
Rx: + 2.8x (28s)



60 Seconds
Step 9
overexposed
Rx: - 0.5x (30s)

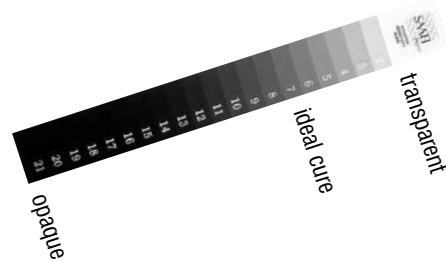


30 Seconds
Step 7
Perfect Cure



DIRECTIONS

Place the SAATI 21-Step Sensitivity Guide on the screen. Optimize your exposure so that when washing out the image, you are left with 7 solid steps (1 = zero density. 21 = solid black.)



To increase exposure by	Multiply exposure by
1 step	1.4x
2 steps	2.0x
3 steps	2.8x
4 steps	4.0x

To decreased exposure by	Multiply exposure by
1 step	0.70x
2 steps	0.50x
3 steps	0.33x
4 steps	0.25x

ADVANCED USES

When you record the correct exposure times for each of your products at different coating thicknesses, you will have a valuable tool that will save your time, product and money. If you expose several stencils for the same amount of time but find some overexposed or details falling out, this can suggest an inconsistencies with your coating thicknesses. You may find that a different step result produces better prints for a particular product you are using. The 21 step guide is useful in that you can determine the optimum result taking into account different cure levels. You can pick any value on the step guide, but for most products, 7 steps is the preferred cure level.

TEC Squeegees printing for the long run

Textile/Graphic screen printing

Tec Squeegees provide premium screen printing performance and quality at a competitive price. Designed to give superior resistance to degradation by commonly used inks, solvents and monomers used in modern printing processes.

Benefits

- Compatible with most UV graphic inks
- Resistant to solvents used in modern ink systems for long print runs
- Precision printing edge - pin sharp reproduction
- Excellent abrasion resistance - last print as sharp as the first
- Made from high grade polyurethane - compatible with a wide range of inks and systems
- Tight manufacturing tolerances - minimal set up and reset times
- Consistent Durometer - keeping your colours strong and vibrant
- High performance, long life and great value.



Durometer/Colour Coding

Tolerance: $\pm 3^\circ$ Shore A

65°	70°	75°	80°
ORANGE	RED	GREEN	BLUE

Softer Squeegee

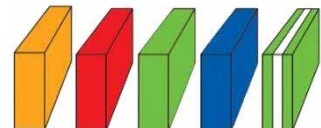
More ink, richer colours

Harder Squeegee

Less ink, greater detail

Profile

- Single Durometer
- Multi Durometer
- D-Cut



Squeegee Blade Profiles

Universal Profile for most printing work



For printing cylindrical, usually firm surfaces



For increased ink deposit (eg. textile printing)



For textiles, and graphics



SAATI Chemical Cleaning Processes

World Class Chemicals for Each Screen Cleaning Step

SAATI offers a comprehensive range of chemical products for screen cataloguing, reclaiming, or recycling. High performance chemicals minimize usage levels while quickly delivering screens that look and perform like new. Tailored products optimize results for cleaning every type of ink and recommended product packages ensure top performance at each stage of the reclaiming process. Screens are recycled with minimal impact to the fabric as well as the environment. Biodegradable ingredients from renewable resources such as palm, corn and soy are heavily used to minimize reliance on components derived from fossil fuels.

PRESS WASH

For Print Maintenance and Colour Changes at Press.

Tec 02

Press Wash or Screenwash for Solvent/Textile Inks.

- Removes inks during and after print
- Fast evaporation
- Low Odour.

NWC20EZ

Aqua Art on Press Screen Wash.

- Removes waterbased inks during & after print
- Can be applied as a spray
- Low odour.

INK REMOVERS

Ink degredients are used to remove ink from screens prior to reclaiming. Water rinseable and drain safe.

Remove TEC 05

Low Cost Emulsifiable Screenwash.

- Fast evaporation
- No oily residue
- Low odour

Remove TEC 06

Water Dilutable Screen Cleaner.

- Fast evaporation
- No oily residue
- Low odour



SAATI Screen Reclaim Process

World Class Chemicals for Each Step Screen Cleaning

EMULSION REMOVERS

To Remove Diazo, Dual-Cure and Photopolymer Emulsions and Films.

ER15

Ready to use Gel Stencil Stripper.
Easy to apply by brush.

Benefits & Features

- Smooth gel that spreads easily and stays put, for maximum effectiveness
- Contains built in degreaser that cuts through any ink/solvent residue to ensure fast and efficient stencil removal.

ER25

Concentrated liquid emulsion remover
Dissolve one part ER 25 in 25 parts water.

Benefits & Features

- Removes all stencil types
- Very easy to dissolve
- Classified as non-hazardous for shipment.

ER1

Powder Concentrate Emulsion Remover.
Concentrated powder that dissolves in water to produce stencil stripper solution.

Benefits & Features

- Economical
- Highly concentrated product
- Recommended to be dissolved at 1% by weight in water for full strength working solution for spray application.



HAZE REMOVERS

To Remove Stains From Mesh After Emulsion Removal.

Remove HR105

- Ready-to-use gel
- Mesh safe - can be left on screen overnight.

Directions for use

After ink and stencil removal, apply the gel with a stiff brush. Let dry - may be left overnight. The gel will not harm mesh. Rinse the screen with a screenwash then high pressure wash.

Remove HR8

- Ready-to-use paste
- Is able to remove the toughest stains
- Works in minutes.

Directions for use

After ink and stencil removal, apply the paste with a stiff brush. Leave approximately 10 minutes - a longer time may weaken mesh. Rinse screen with a pressure wash.

Remove HR89

- One part, ready-to-use (gel)
- Application with a brush.

Directions for use

After ink and stencil removal, apply gel with a brush. Leave for maximum 10 minutes; a longer time may harm mesh. Rinse screen with a pressure wash.

Description	Remove HR105	Remove HR8	Remove HR89
Colour	Yellow	Clear	Grey
Timing	Overnight	10 minutes	5 minutes
Appearance	Gel	Paste	Cream
Mixing Ratio	Ready to use	Ready to use	Ready to use
Why Choose This Product	Less aggressive. Does not harm mesh	Standard Power	Aggressive Power

SAATI Screen/Stencil Making

Quality Screens For All Applications

Screen Stretching

We offer a full in-house screen stretching service, manufacturing bespoke Aluminium and Hardwood frames with numerous section options available.

We stock Saati mesh for all applications:-

Hi-TEX - General Purpose - For Textiles & Ceramics

HIR - Standard Long Elongation Mesh

HI-DRO - For Waterbased Screen Inks

SS - Stainless Steel Mesh



Pre Coated Frame (PCF)

Our pre coated frames offer a cost effective solution for any screen printing facility.

- No need for machinery investment
- Reduced downtime
- High quality components
- Tailor made for your specific application
- Individually wrapped
- 6 months shelf life.



Stencil Making

In addition to manufacturing ready meshed and pre coated screens we also offer a complete screen making service for Graphic & Textile applications. We can output film positives from your supplied artwork and expose them onto the screen for you. Simply send the artwork file with details of the substrate you intend to use, the ink system, desired positioning and we can take care of the rest.



Film Positive

The key to a great stencil is the quality of the film positive, therefore the artwork needs to be optimized for film output.

Artwork Requirements

- The artwork file should be in CMYK profile.
- All assets of artwork need to be 100% black
- All text should be converted to outlines
- Any images need to be 300dpi (minimum)
- Multi colour images should have a separate layer for each colour.

Artwork Service

If you require artwork to be created or just have an old photocopy of your artwork, no problem, our in house artwork department can produce print ready files for you. With the latest design tools at their disposal we offer a reliable, flexible service with a quick turn around.



SAATI Screen Reclaim Process

High Quality Accessories for Your Screen Recycling Process

LARGE SCREEN BRUSHES

- 100% chemically resistant
- Medium stiffness bristles
- Perfect for spreading degreasers, decoaters and haze removers on larger screens.



BRUSH PADS

100% chemically resistant synthetic screen cleaning pads with an ergonomic handle that makes them convenient for applying degreasers, decoaters and haze removers to large screens.

PALLET KNIVES

Flexible & Durable ink knife.

- Will help your ink distribution be faster, cleaner and more consistent
- Stainless Steel Blade
- Easy to clean.

Available in 4 / 6 / 8 / 10 / 12 inch Blades



Screen Making Accessories

High Quality Accessories for Your Screen Making Cycle

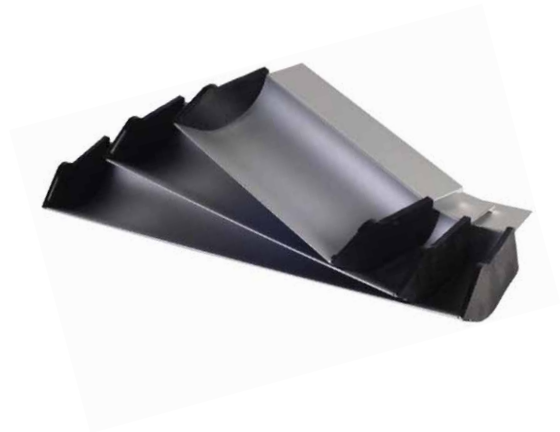
DUAL EDGE COATING TROUGHS

- Available in lengths
- Coating edge profiles of 0.5 & 1.0 mm combined into one tool
- Made of high quality aluminium.



SINGLE EDGE COATER TROUGHS

- Available in lengths
- Coating profile of 1.25mm
- Holds a high volume of emulsion for longer coating sessions.



SQUEEGEE HANDLES

- Available in wood and aluminium
- Choice of sizes
- Can be supplied with or without blade.



FRAMES

- Aluminium and Hardwood options available
- Choice of sections and sizes
- Coated or Uncoated.



Screen Making Accessories

High Quality Accessories for Your Screen Making Cycle

MIXING CUPS

Single walled recyclable cups.



Available in 8 and 16oz

STELLIER WHITE WIPES

- Absorbent lint free fabric wipe
- Strong and tear resistant
- Contain no silicone or binders
- Safe to use with MEK1, isopropyl alcohol, solvents and other cleaning agents

Sheet Size 380 x 300mm

400 sheets per roll



Floor Stand Roll Dispenser

HAND CLEANING PASTE - TEC21

Naturally powerful non-toxic citrus beaded hand cleaner
Formulated to cut through industrial grease & grime quickly and easily. Contains thousands of polymer beads to produce a high performance micro-pumice cleaning action that rapidly removes stubborn grime, without damaging the skin.



BLACK PLASTIC BUCKETS

High quality plastic, with a watertight lid.

The range is ideal for storing, transporting and decanting liquids and waterbased products.

Available in 1 and 5 litre



METAL OPEN TOP PAIL

Top quality tin, with a watertight lid.

The range is ideal for storing, transporting and decanting liquids with aggressive properties including industry applications such as adhesives, solvents, varnishes and chemicals.

Non Internal lacquered Finish (Not Suitable For Waterbased Products)

Available in 1 and 5 litre



Exposure Units



PRINTASCREEN
2 & 5kw halide
Fully enclosed exposure unit.



UV LED(400nm) EXPOSURE UNIT
Built to customers specified sizes, zoned areas, backlight
Vertical, horizontal and table top versions available.

Drying Cabinets



HORIZONTAL
5 drawer
Mesh or floating bar shelves



VERTICAL (toast rack)
Built to suit available space.



Handtable

Stencil Developing

WASHOUT BOOTHS
Zinc galvanised
Polypropylene
Illuminated
Special filters



MANUAL - STANDARD
Robust construction
Vacuum print base
Precision registration
Fully customisable



Textile Printing Equipment



HEATED BED OPTION

Premium print surface with step & repeat capability.
Available in any size up to 30m in length.



INFRA-RED CONVEYOR DRYER

Textile, metal or glass drying unit



MANUAL T-SHIRT PRINTERS

4 or 6 colour T-Shirt printer.
All print heads down with adjustable screen height.



MANUAL BENCH T-SHIRT PRINTERS

1, 2 or 4 colour T-Shirt printer.

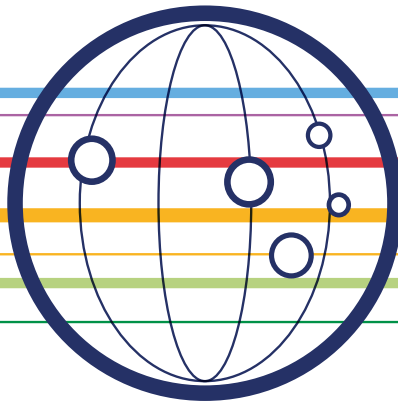


UMBRELLA PRINTERS

Single colour manual and semi-automatic available.



PRINTER COOLER AND FLASH CURE UNITS



378 Shelton New Road, Basford, Stoke on Trent ST4 6EW

Damien Spillane

TECHNICAL SALES MANAGER

Tel: 01782 635888
Mobile: 07719 314679
email: d.s@screenprintessentials.com

Simon Bordicott

TECHNICAL DIRECTOR

Tel: 01782 635888
email: sales@screenprintessentials.com

Lee Wall

MANAGER

Tel: 01782 635888
Mobile: 07817 972074
email: sales@screenprintessentials.com

Chris Malpus

MANAGING DIRECTOR

Tel: 01782 635888
Mobile: 07973 616635
email: sales@screenprintessentials.com

email: sales@screentecprintessentials.com

www.screentecprint.co.uk

—SAATI

We cross-innovate